



WELCOME
TO A
SPIRITUAL
AND SPATIAL
HAVEN.



WELCOME TO A HEAVENLY ABODE.

Santhi is an ancient Sanskrit word for inner peace. A feeling of bliss that all of us strive for but only a few attain. Here's your chance to accomplish that goal. VKL Santhi Homes located in Santhigiri Ashram is a unique project. It is the perfect balance of spiritual and spatial living and has tailor-made 1/2/3 BHK and single apartments.

WELCOME TO AN INTERNATIONAL THINKING.

Conceived by Santhigiri Ashram and constructed by VKL Builders. It has the signature international thinking that VKL Builders incorporate into their housing complexes. Taking inspiration from across the borders, VKL Builders have successfully captured the hearts of people with their aesthetic design and functionality.





WELCOME TO A SERENE LOCATION.

Santhigiri Ashram was founded by Navajyothisree Karunakara Guru in 1964. The Ashram promotes a lifestyle that is lived at peace with God and Nature. And it's also home to the Lotus Parnasala - a monument dedicated in memory of the founder.

WELCOME TO WORLD CLASS STANDARDS.

AMENITIES

Landscaped gardens • Health club
Meeting hall • Swimming pool
Centralized gas supply • Modern
waste water treatment plant
• Exclusive car wash area
• Broadband internet connection
Children's play area • Common
toilets for drivers and servants
Individual letter box • Rain water
harvesting • 24 hrs Security
Intercom facility in every apartment



LOCATION MAP

Not to scale



Distance from VKL Santhi Homes

- Pothencode Jn. - 2.5 km • Sreekariyam - 12 km • Kazhakootam - 12 km • Technopark - 13 km
- Trivandrum Central Railway Station - 21 km • Kazhakootam Railway Station - 12 km • Attingal Jn. - 15.4 km
- Murukkumpuzha Railway Station - 9.3 km • Trivandrum International Airport - 22.6 km • Sree Gokulam Medical College - 9 km
- Happy Land Water Theme Park - 8.5 km

Prime facilities at close proximity

- Shopping Mall
- Vegetable Stall & Food Services
- Senior Secondary School (CBSE Syllabus)
- Higher Secondary School (State Syllabus)
- International School
- Siddha Medical College
- Engineering Colleges
- Ayurveda Hospital & Research Institute
- Homeo Clinic
- Institute of Medical Sciences
- KIMS
- Ananthapuri Hospital
- Take a break - Tourist Amenity Center (An upcoming project of Kerala Government in association with Santhigiri Ashram)
- International Convention Center (Upcoming Project)
- Ayurveda Medical College (Upcoming Project)
- Veli Tourist Village

SITE MAP







Type A - 3 BHK 1358 sq. ft.



Type B - 1 BHK 672 sq. ft.

C

SBA-627 SFT



Type C - 1 BHK 627 sq. ft.

D

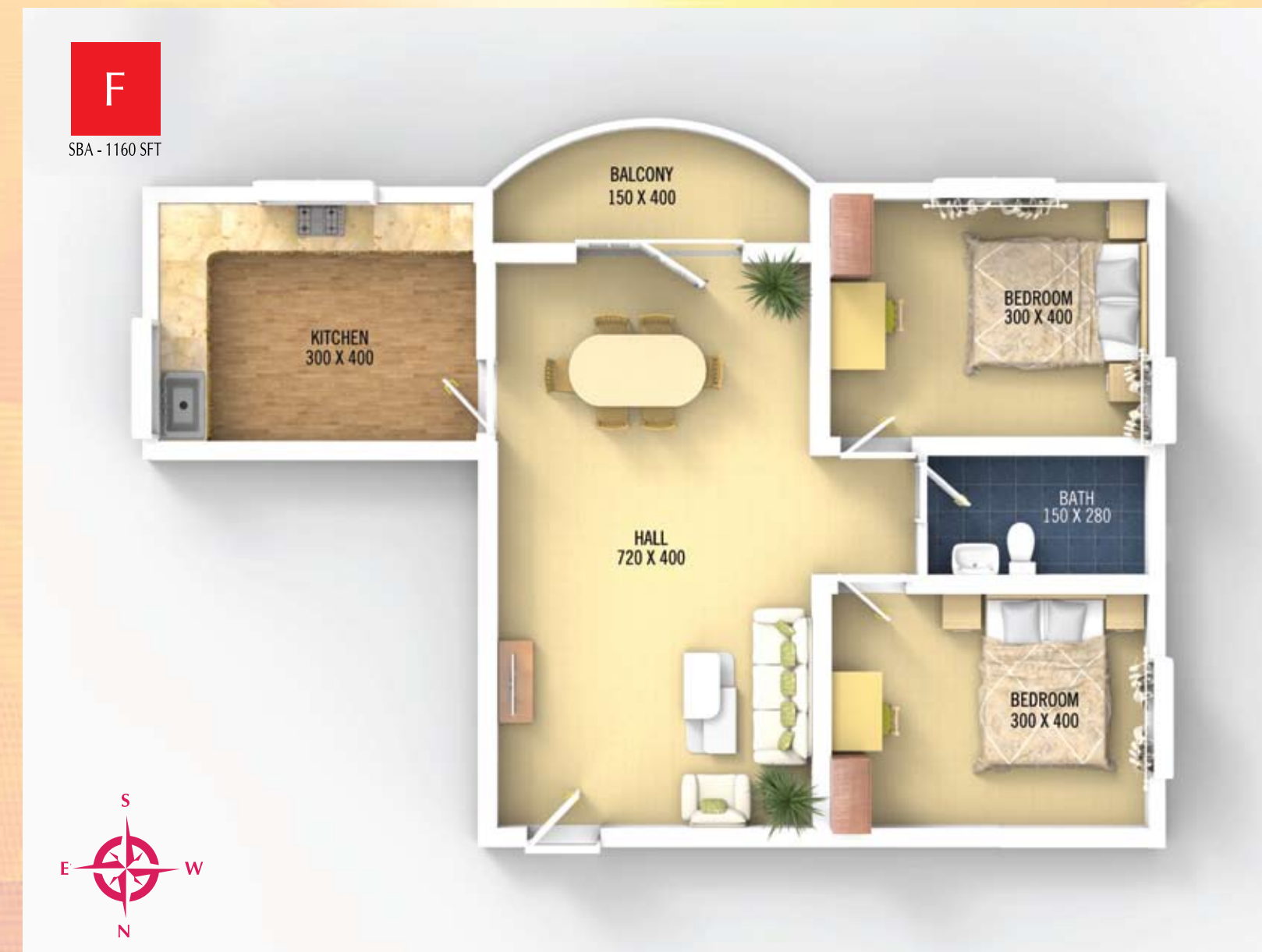
SBA-471 SFT



Type D - Single Apartment 471 sq. ft.



Type E - 2 BHK 1182 sq. ft.



Type F - 2 BHK 1160 sq. ft.

G

SBA-1413 SFT



Type G - 3 BHK 1413 sq. ft.

H

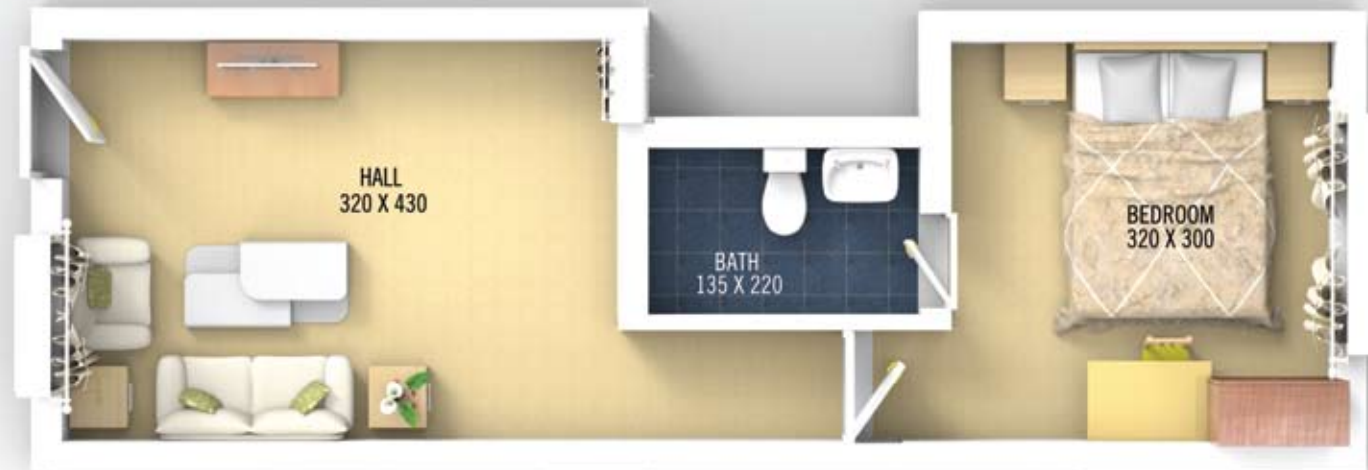
SBA-464 SFT



Type H - Single Apartment 464 sq. ft.



SBA-464 SFT



Type I - Single Apartment 464 sq. ft.



SBA - 1118 SFT



Type J - 2 BHK 1118 sq. ft.



SBA-1499 SFT



Type K - 3 BHK 1499 sq. ft.



SBA-743 SFT



Type L - 1 BHK 743 sq. ft.

SPECIFICATIONS

FOUNDATION: Deep RCC cast in situ piles resting on hard rock (DMC Method) designed based on geo technical investigation and recommendations of foundation consultant.

SUPERSTRUCTURE: Earthquake resistant RCC framed structure with shear walls designed by expert Structural Engineer.

WALLS: Best quality cement hollow blocks, plastered over with cement mortar and with putty finish.

DOORS & WINDOWS: Best quality hard wood front door. Hard wood internal doors with panelled shutters. Powder coated aluminium windows with grills and glazed shutters. PVC doors for toilets.

FLOORING: Vitrified tiles for the entire flat except toilets and common area. Toilets and common area done with best quality antiskid tiles.

KITCHEN: Granite counter top with rounded edges, stainless steel sink, ceramic tile dadoing up to 45 cm ht. above the counter, provision for water purifier and washing machine point.

TOILETS: Flooring with antiskid tiles, dadoing in the walls up to 210 cm ht. with ceramic tiles, concealed piping, Cera or

equivalent sanitary fixtures and CP fittings, hot and cold mixer tap with shower. Provision for geyser connection in one toilet.

PAINTING: Acrylic weather coating for front exterior walls, plastic emulsion painting with putty finish for interior walls, enamel paint for doors and grills.

ELECTRICAL: Independent three phase wiring including ELCB and MCB. Two light points and one fan point in each room. Exhaust fan provision in kitchen and toilets. Switches - Modular type 6A and 16A sockets in each apartment. Provision for TV connection and AC in master bedroom.

TELEPHONE: Concealed conduits for telephone in living and master bedroom.

WATER SUPPLY: Round-the-clock water supply through sump and overhead tank.

GENERATOR: Generator for common lighting, lifts and 3 points for each flat.

ELEVATOR: Two fully automated high speed lifts.

SECURITY: 24 hours security.

FIRE FIGHTING: Modern fire fighting system as per provisions in National Building Code and Govt. norms.

VKL SERVICES

VKL Services is born out of the company's commitment to stand by its clientele. When you decide to opt for a VKL built home, the company goes all out to safeguard your interests. Because VKL believes in building not just better homes but better living too. After the handing over of the completed projects, VKL has unique after sales services including Home Care and Interiors.

Interior Decor Division

VKL Group has within its fold an international interior designing firm named SAACH. The VKL Interior Division can ably handle the decking up of your interior spaces with aplomb.

Rental Arrangements

VKL Services can arrange high value renting of your home, if you are obliged to reside elsewhere or you are a NRI. VKL Services will see that the tenants are of bonafide nature and the documentation and rentals are prompt.

Finding Tenants • Execution of Contract • Pre and Post Inspection of Apartments • Collection of Rental and Advance Cheque.

Home Care Division

Home Care is an optional service offered exclusively to VKL homeowners. By enrolling with Home Care one can avail a broad range of utility, property management and allied services. Right from housekeeping, periodical maintenance and upkeep, trouble shooting of electrical and plumbing installations, remittance of statutory payments come under the purview of Home Care Division. The care of your home is best left to the professionals who built it. All that it costs you is a nominal annual sum.

Housekeeping

House Cleaning • Pest Control • Plumbing and Electrical Maintenance • Carpentry and Masonry Jobs.

Remittance of Bills

Electricity Bills • Telephone Bills • Association Dues • Taxes Due to Local Bodies of Government • Insuring Your Property, if required • Annual Cable TV Charges • Monthly Maintenance Charges.



VKL Builders India Pvt. Ltd.

Trivandrum: TC 91/1031, NH Bypass Road, Venpalavattom, Anayara P.O., Trivandrum 29
Cochin: First floor, Anjana Complex, Kundannoor, Vytilla - Aroor Bypass Road, Maradu P.O., Cochin 04
info@vklbuilders.com www.vklbuilders.com
Toll free: 1800 1200 855 Mob: 70340 22332, 70340 22334

India | Bahrain | Saudi Arabia

Santhigiri Ashram, Pothencode

Mr. Sreekumar - Mob: 81118 82411